



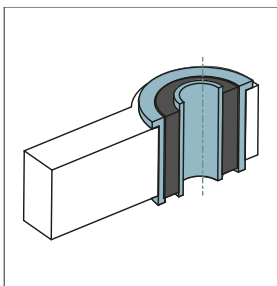
MANUAL TEDGUM



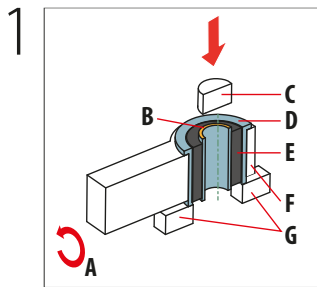
Disassembly of the metal-rubber-metal bushing (without removing the outer sleeve) and assembly of the metal-polyurethane bushing (2 halves) – (Manual #31)

The below manual shows how to replace a metal-rubber-metal bushing properly with a metal-polyurethane bushing composed of 2 halves and an inner metal sleeve. For this installation, we leave the outer metal sleeve in the socket.

BEFORE REPLACEMENT

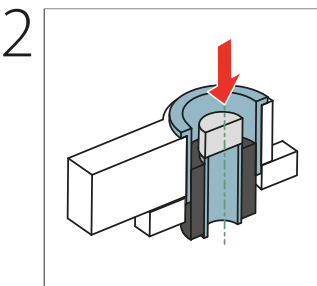


REMOVING THE OLD BUSHING



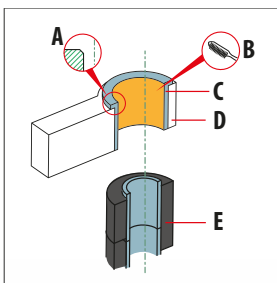
- A – Rotate the element
- B – When pressing out, we press on the upper surface of the inner sleeve
- C – Press
- D – Outer bushing
- E – Inner bushing with rubber
- F – Control arm
- G – Place blocks under control arm

The inner sleeve with the rubber should be removed, and the outer sleeve should be left in the socket.



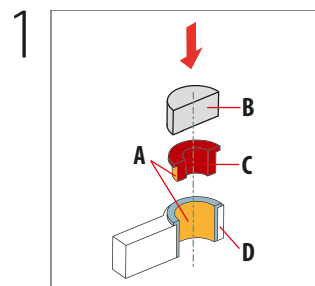
After removing the inner sleeve together with the rubber, it is necessary to clean the outer sleeve from rubber remnants.

CORRECTLY REMOVED ELEMENT



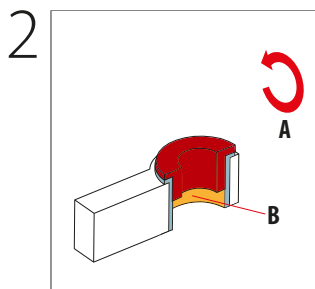
- ATTENTION!**
- A – Remember to carry out a phase before installation to facilitate the installation of the new element
 - B – Before installation, thoroughly clean the entire socket of all dirt
 - C – Outer sleeve
 - D – Control arm
 - E – Inner sleeve with rubber

INSTALLATION



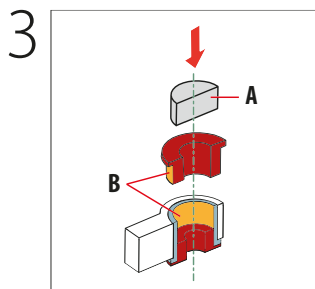
- A – Surfaces to be greased
- B – Press
- C – Half of a polyurethane insert
- D – Control arm

Press the polyurethane bushing into the socket from one side



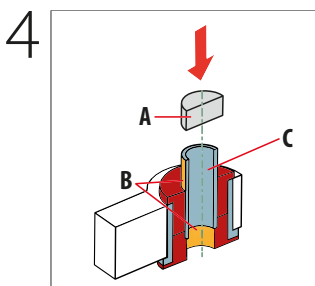
- A – Rotate the element
- B – Surfaces to be greased

Then turn the control arm over



- A – Press
- B – Surfaces to be greased

Press in the second polyurethane bushing



- A – Press
- B – Surfaces to be greased
- C – Inner sleeve



This and other manuals are available for download on our website at:

<https://www.tedgum.pl/en/technical-support/>

Manual shown above is just a presentation showing how the repair procedure can be made. **TEDGUM** company does not bear responsibility for any errors in the manual and incorrect interpretation of the manual. Repair should be preceded by skilled personnel with the use of appropriate tools and with keeping all the safety means. All rights reserved.