



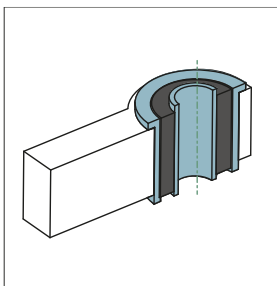
MANUAL TEDGUM



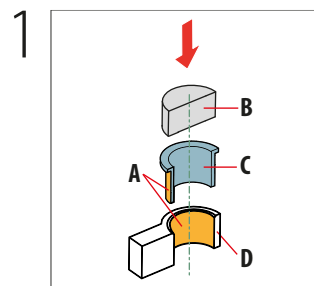
Disassembly of the metal-rubber-metal bushing and installation of the metal-polyurethane(2 halves)-metal bushing (Manual #28)

For some bushings, there is an additional element that is located inside the bushing and which has a flange on one side. The instructions below show how to properly replace the metal-rubber-metal bushing and use the original inner insert.

BEFORE REPLACEMENT



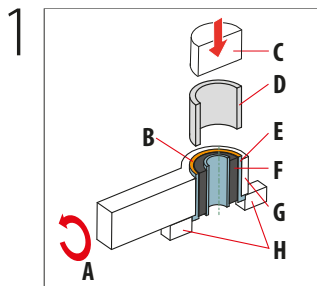
INSTALLATION



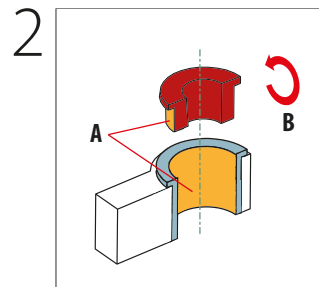
- A – Surfaces to be greased
- B – Press
- C – Outer metal sleeve
- D – Control arm

Press the outer sleeve into the socket.

REMOVING THE OLD BUSHING

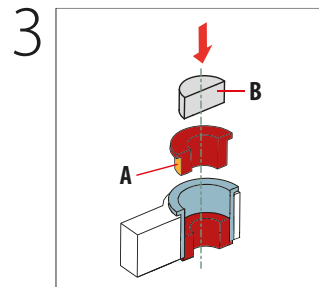
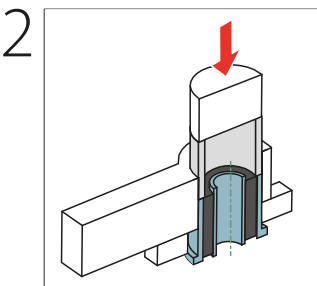


- A – Rotate the element
- B – When pressing out, press on the upper surface of the outer sleeve
- C – Press
- D – Auxiliary bushing for pressing out
- E – Outer sleeve
- F – Inner bushing with the rubber
- G – Control arm
- H – Place blocks under control arm



- A – Surfaces to be greased
- B – Rotate the element

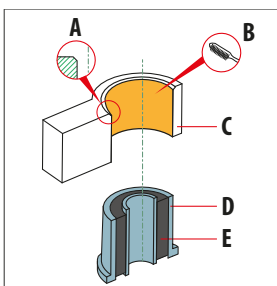
Press the polyurethane bushing into the socket from the one side, then rotate the control arm.



- A – Surfaces to be greased
- B – Press

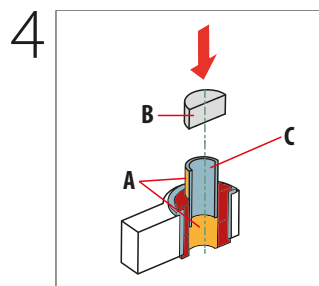
Press in the second polyurethane bushing.

CORRECTLY REMOVED ELEMENT



ATTENTION!

- A – REMEMBER! Carry out a phase before installation to facilitate the installation of the new element
- B – REMEMBER! Before installation, thoroughly clean the entire socket of all dirt
- C – Control arm
- D – Outer sleeve
- E – Inner bushing with the rubber



- A – Surfaces to be greased
- B – Press
- C – Inner sleeve



This and other manuals are available for download on our website at:

<https://www.tedgum.pl/en/technical-support/>

Manual shown above is just a presentation showing how the repair procedure can be made. **TEDGUM** company does not bear responsibility for any errors in the manual and incorrect interpretation of the manual. Repair should be preceded by skilled personnel with the use of appropriate tools and with keeping all the safety means. All rights reserved.