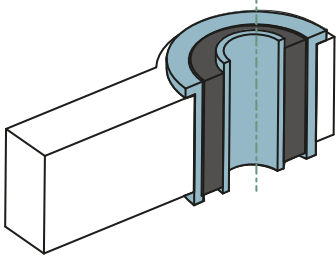




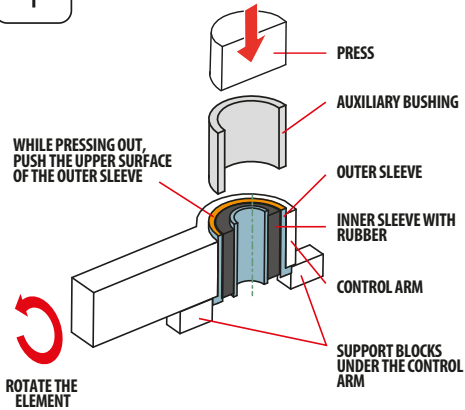
# DISASSEMBLY OF THE METAL-RUBBER-METAL BUSHING AND ASSEMBLY OF THE METAL-POLYURETHANE BUSHING (2 HALVES) WITHOUT THE OUTER SLEEVE

## BEFORE DISASSEMBLY

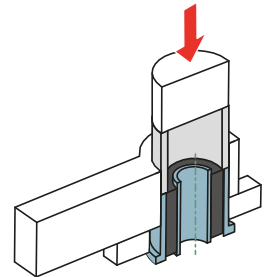


## DISASSEMBLY

1



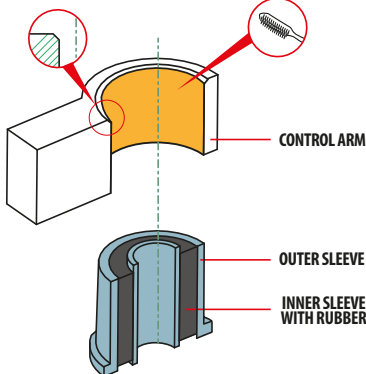
2



## CORRECTLY DISASSEMBLED ELEMENT

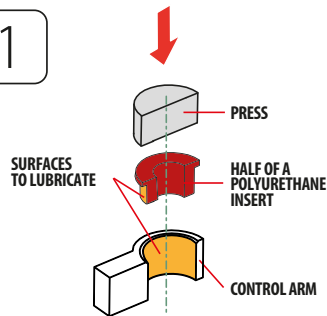
**ATTENTION!**  
REMEMBER TO MAKE A CHAMFER  
BEFORE INSTALLATION TO FACILITATE  
INSTALLATION OF THE NEW ELEMENT

**ATTENTION!**  
BEFORE ASSEMBLY, THOROUGHLY  
CLEAN THE ENTIRE SOCKET OF  
ALL CONTAMINANTS



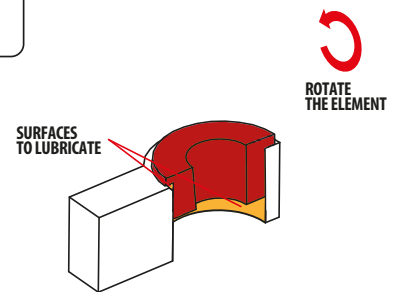
## INSTALLATION

1



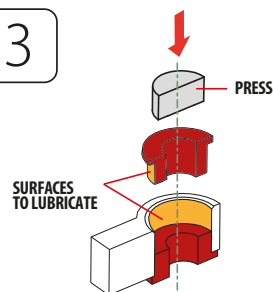
PRESS THE POLYURETHANE BUSHING INTO  
THE FIRST SIDE OF THE SOCKET

2



TURN THE CONTROL ARM

3



PRESS THE POLYURETHANE BUSHING INTO  
THE FIRST SIDE OF THE SOCKET

4

