

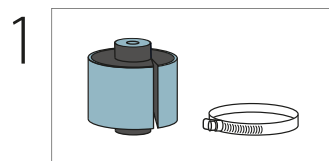


MANUAL TEDGUM

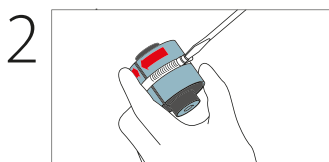


How to install a split bushing (metal-rubber-metal or metal-polyurethane-metal) using a hose clamp (Manual #23)

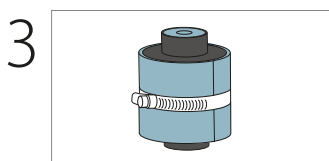
Some suspension bushings are constructed in a slightly different way than the traditional one. An example of this are bushings that have a longitudinal cut on the outer sleeve (and part of the damping element). This type of bushing in its initial state has a diameter larger than the socket in which it is to be installed. To properly install this type of bushing, it must be compressed for assembly, and then the bushing expands in the socket and thus becomes immobilized. It is best to use a metal hose clamp to install such a bushing.



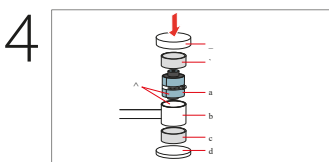
Split bushing and the metal hose clamp.



Compressing the split bushing with a clamp.

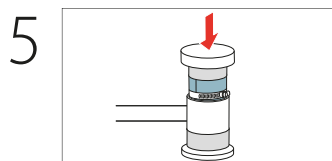


The clamp is tightened to the point that the bushing can be pressed into the control arm.

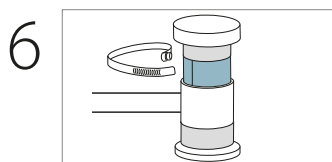


Lubrication of the indicated surfaces with graphite grease. Pressing the bushing into the control arm socket.

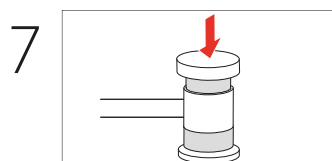
A – Surfaces to be greased B – Press
C – Auxiliary bushing D – Split Bushing TEDGUM
E – Control arm F – Auxiliary bushing
G – Metal plate



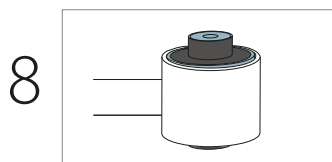
Press the bushing in to the clamp.



We remove the clamp to further press the bushing in.



Final pressing the bushing in.



Correctly pressed in element.



This and other manuals are available for download on our website at:

<https://www.tedgum.pl/en/technical-support/>

Manual shown above is just a presentation showing how the repair procedure can be made. **TEDGUM** company does not bear responsibility for any errors in the manual and incorrect interpretation of the manual. Repair should be preceded by skilled personnel with the use of appropriate tools and with keeping all the safety means. All rights reserved.