



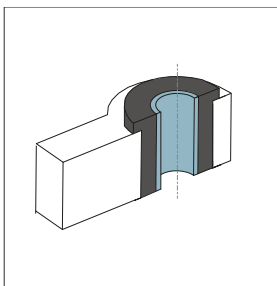
MANUAL TEDGUM



The process of replacing a glued metal-rubber bushing with a metal-polyurethane or non-glued metal-rubber bushing (Manual #21)

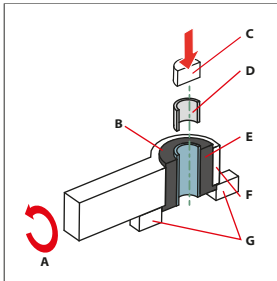
Below is the procedure for replacing a two-piece glued bushing with an appropriate two-piece non-glued bushing:

BEFORE REPLACEMENT



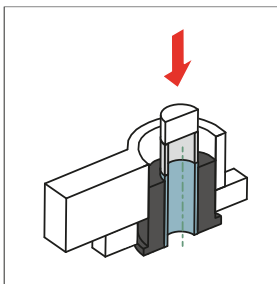
REMOVING THE BUSHING

1

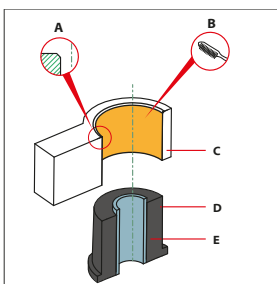


- A – Rotate element
- B – While removing bushing, press on the upper surface of the inner bushing
- C – Press
- D – Auxiliary bushing for pressing out
- E – Inner bushing
- F – Control arm
- G – Place blocks under control arm

2



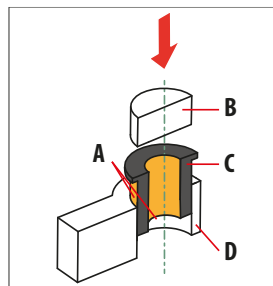
CORRECTLY REMOVED ELEMENT



- ATTENTION!**
Before installation of the new bushing, precisely clean the socket and make chamfer to press the new element easier
- A – Make a chamfer
 - B – Clean the socket thoroughly
 - C – Control arm
 - D – Outer rubber bushing
 - E – Inner bushing

INSTALLATION

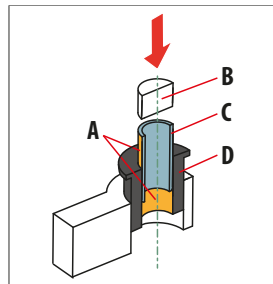
1



- A – Surfaces to be greased
- B – Press
- C – Polyurethane/rubber insert
- D – Control arm

All elements should be properly lubricated with the supplied silicone grease

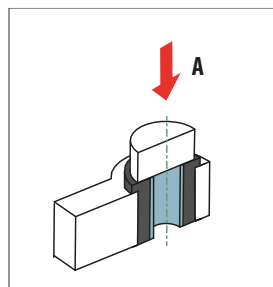
2



- A – Surfaces to be greased
- B – Press
- C – Inner bushing
- D – Polyurethane/rubber insert

While pushing the inner bushing, the Press the new polyurethane / rubber insert to its half of its length, then press it on the metal bushing

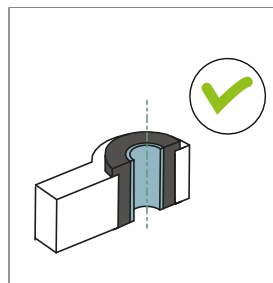
3



- A – Press to align

Press the new insert until the lower flange comes out of the lower part of the control arm.

4



Correctly pressed in element



This and other manuals are available for download on our website at:

<https://www.tedgum.pl/en/technical-support/>

Manual shown above is just a presentation showing how the repair procedure can be made. **TEDGUM** company does not bear responsibility for any errors in the manual and incorrect interpretation of the manual. Repair should be preceded by skilled personnel with the use of appropriate tools and with keeping all the safety means. All rights reserved.