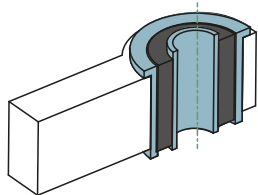




THE PROCESS OF REPLACING THE BUSHING WITH A METAL-POLYURETHANE OR NON-GLUED METAL-RUBBER BUSHING (MANUAL #20)

BEFORE DISASSEMBLING



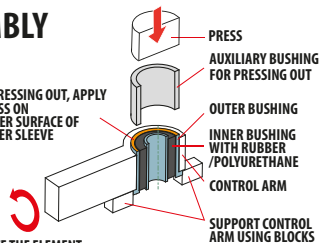
DISASSEMBLY

1.

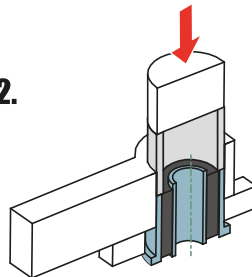
WHEN PRESSING OUT, APPLY THE PRESS ON THE UPPER SURFACE OF THE OUTER SLEEVE



ROTATE THE ELEMENT



2.

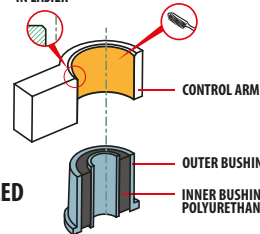


CORRECTLY DISASSEMBLED ELEMENT

ATTENTION!

MAKE A CHAMFER TO MAKE PRESSING IN EASIER

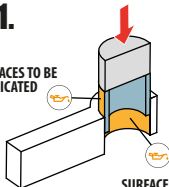
REMEMBER TO PRECISELY CLEAN THE SOCKET



ASSEMBLY

1.

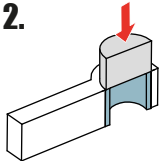
SURFACES TO BE LUBRICATED



SURFACES TO BE LUBRICATED

2.

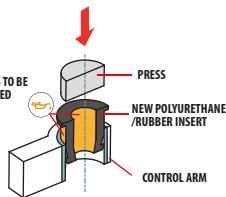
ALL PARTS MUST BE PROPERLY LUBRICATED WITH THE SUPPLIED LUBRICANT



3.

SURFACES TO BE LUBRICATED

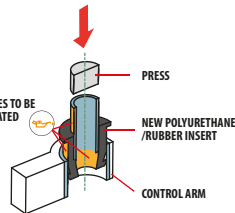
PRESS THE NEW POLYURETHANE / RUBBER INSERT TO HALF OF ITS LENGTH



4.

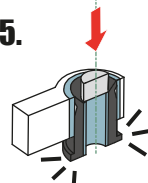
SURFACES TO BE LUBRICATED

THEN PRESS ON THE METAL BUSHING



5.

PUSH THE NEW INSERT UNTIL THE LOWER FLANGE GO OUT OF THE CONTROL ARM



6.

PRESS TO ALIGN

