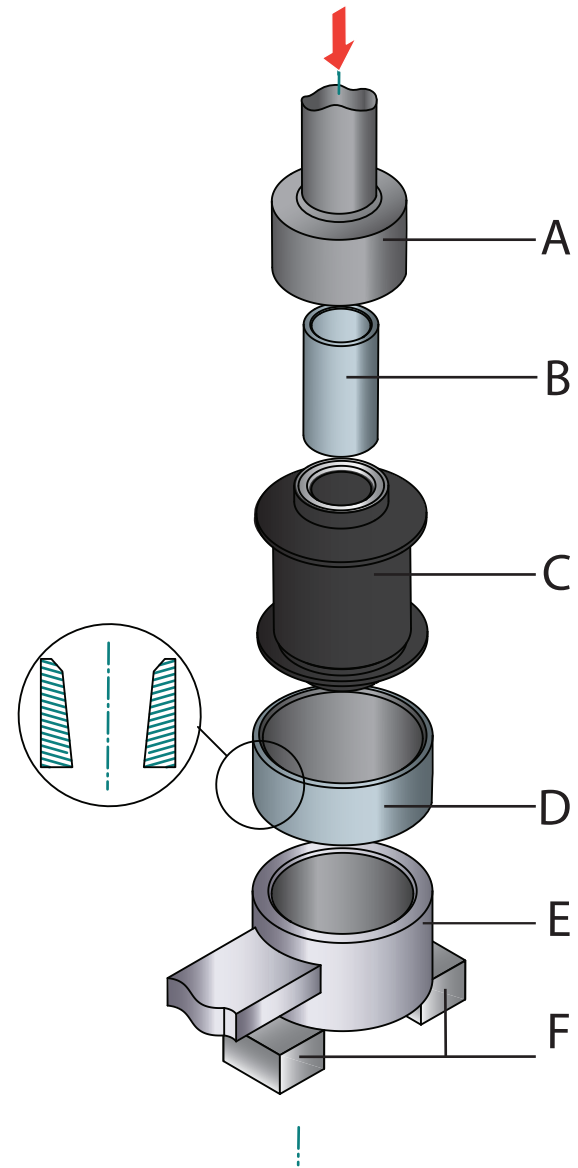


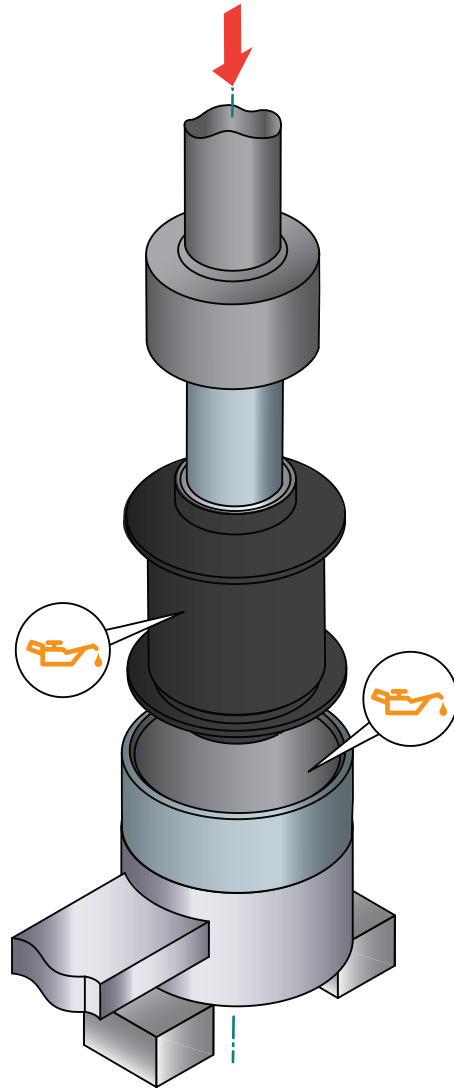


# INSTALLATION PROCESS OF A METAL-RUBBER BUSHING (MANUAL #11)

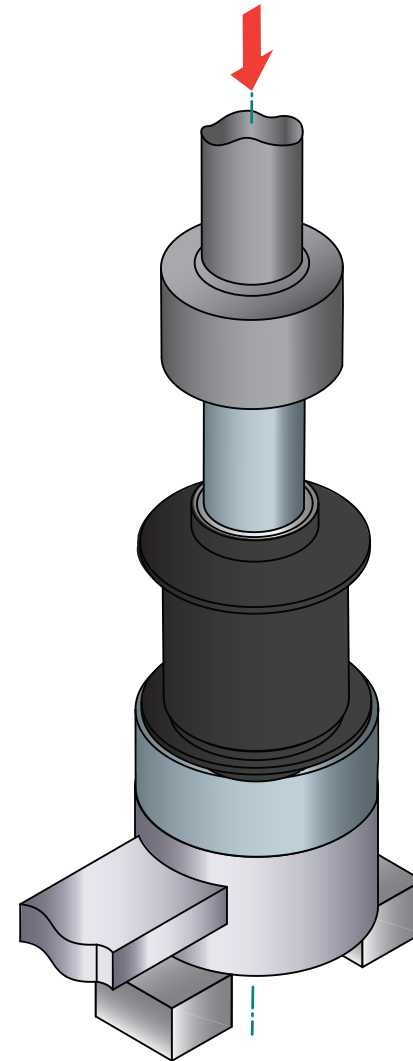
1



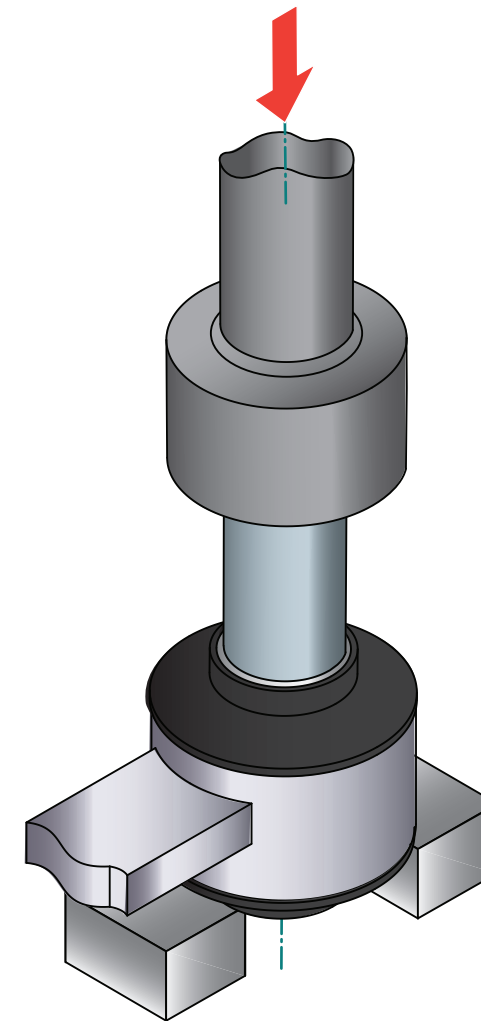
2



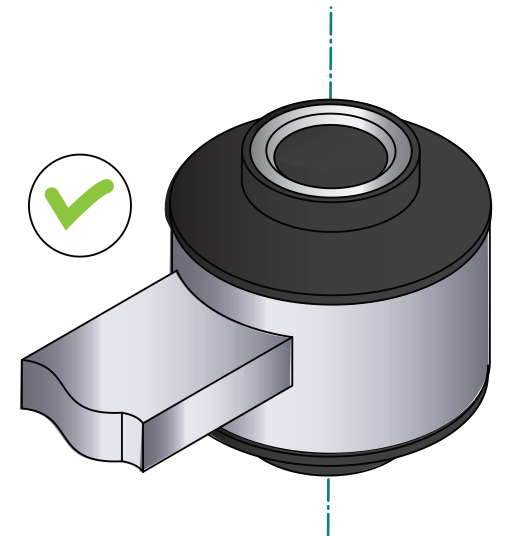
3



4



5



Lubricate the indicated surfaces with grease



Do not use the hammer for assembly, as the element will be damaged

A Press piston  
B Auxiliary sleeve

C Metal-rubber bushing  
D Conical sleeve

E Swingarm socket  
F Support