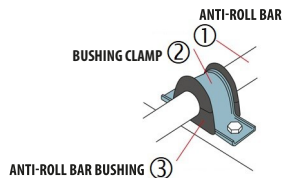




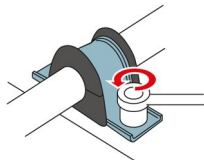
REPLACEMENT OF ANTI-ROLL BAR BUSHING

BEFORE DISASSEMBLY



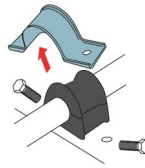
DISASSEMBLY

1.

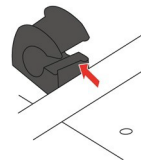


USING A WRENCH, UNSCREW THE BOLTS
SECURING THE RUBBER CLAMP

2.



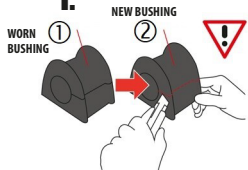
AFTER UNSCREWING THE FIXING SCREWS,
REMOVE THE CLAMP



REMOVE THE WORN ANTI-ROLL BAR BUSHING

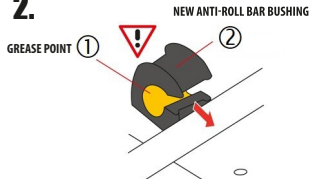
ASSEMBLY

1.



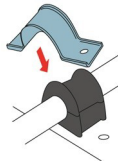
IF THERE IS NO CUT ON THE ANTI-ROLL BAR
BUSHING, IT SHOULD BE MADE IN THE SAME
PLACE AS IN THE ORIGINAL

2.



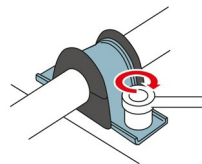
MOUNT A NEW ANTI-ROLL BAR BUSHING.
IF IT IS A POLYURETHANE ELEMENT,
LUBRICATE IT WITH THE INCLUDED LUBRICANT

3.



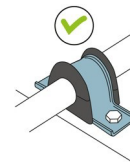
PUT THE CLAMP BACK IN ITS PLACE

4.



USE A WRENCH TO TIGHTEN
THE BOLTS SECURING THE CLAMP

5.



CORRECTLY MOUNTED ELEMENT